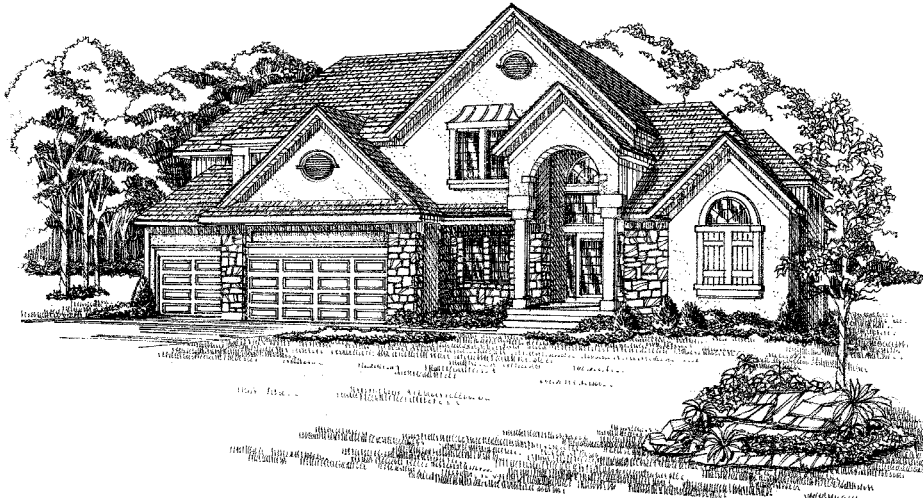


The MARINER

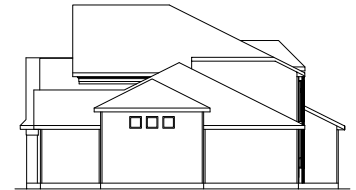
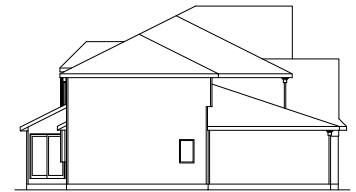
Pfeifer King Bldg. Corp.
1550 SW Market St., Ste. 210
Lee's Summit, MO 64081-3113

www.pfeiferking.com
designbuild@pfeiferking.com
Office: 816-524-4986
Fax: 816-554-0111

PLAN NO.: MARINER
TOTAL SQ. FT.: 3544
BEDROOMS: 4
BATHS: 3 1/2



Artist's conception only.



Designed Exclusively For
Pfeifer King Bldg. Corp.
All Rights Reserved

MAIN LEVEL: 2237 SQ. FT.
SECOND LEVEL: 1308 SQ. FT.
TOTAL: 3544 SQ. FT.

